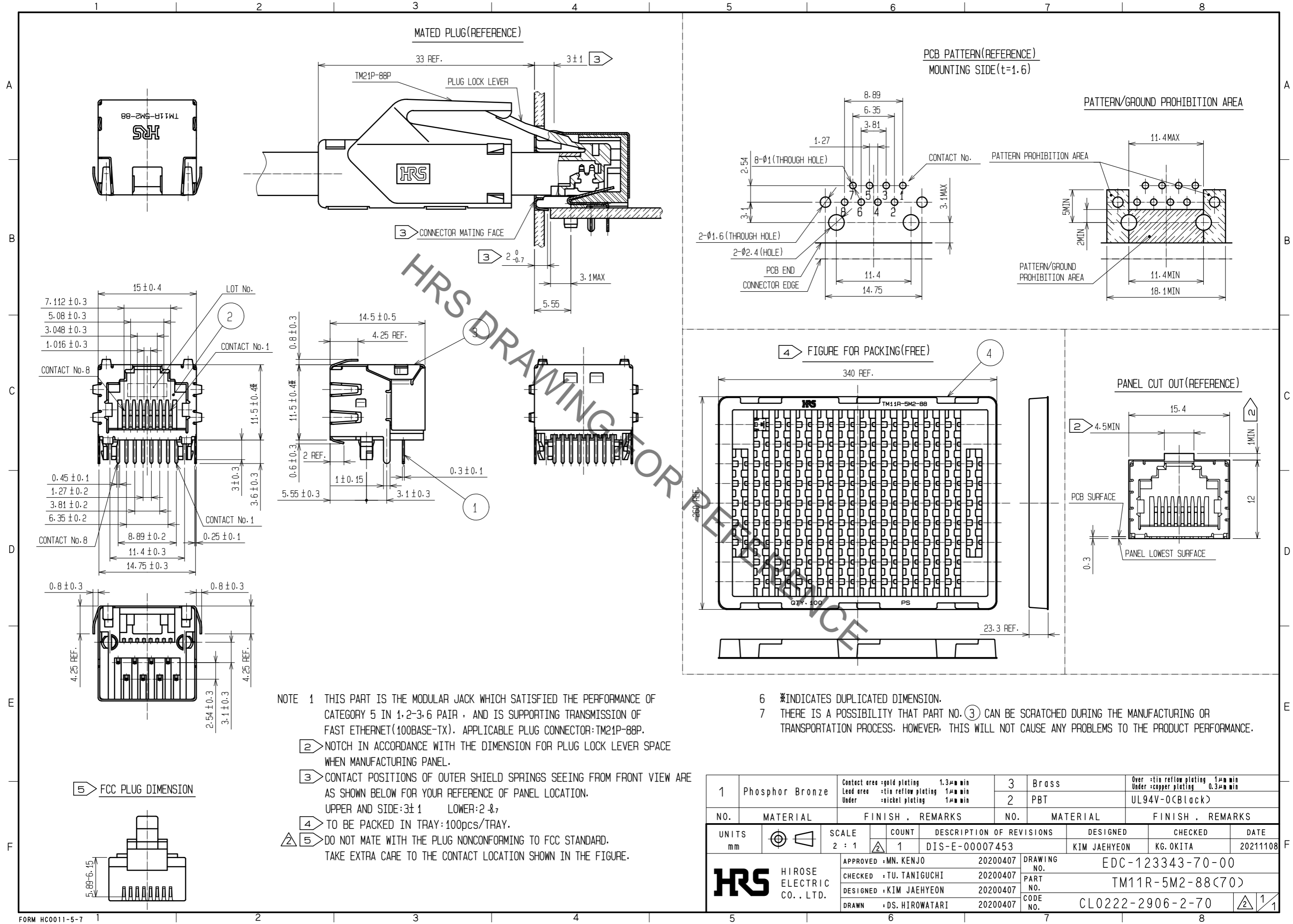


Jul.1.2022 Copyright 2022 HIROSE ELECTRIC CO., LTD. All Rights Reserved.
 In case of consideration for using Automotive equipment / device which demand high reliability, kindly contact our sales window correspondents.



NOTE 1 THIS PART IS THE MODULAR JACK WHICH SATISFIED THE PERFORMANCE OF CATEGORY 5 IN 1,2-3,6 PAIR , AND IS SUPPORTING TRANSMISSION OF FAST ETHERNET(100BASE-TX). APPLICABLE PLUG CONNECTOR:TM21P-88P.
 ② NOTCH IN ACCORDANCE WITH THE DIMENSION FOR PLUG LOCK LEVER SPACE WHEN MANUFACTURING PANEL.
 ③ CONTACT POSITIONS OF OUTER SHIELD SPRINGS SEEING FROM FRONT VIEW ARE AS SHOWN BELOW FOR YOUR REFERENCE OF PANEL LOCATION.
 UPPER AND SIDE:3±1 LOWER:2±1
 ④ TO BE PACKED IN TRAY:100pcs/TRAY.
 ⑤ DO NOT MATE WITH THE PLUG NONCONFORMING TO FCC STANDARD. TAKE EXTRA CARE TO THE CONTACT LOCATION SHOWN IN THE FIGURE.

6 *INDICATES DUPLICATED DIMENSION.
 7 THERE IS A POSSIBILITY THAT PART NO. ③ CAN BE SCRATCHED DURING THE MANUFACTURING OR TRANSPORTATION PROCESS. HOWEVER, THIS WILL NOT CAUSE ANY PROBLEMS TO THE PRODUCT PERFORMANCE.

1	Phosphor Bronze	Contact area :gold plating 1.3µm min Lead area :tin reflow plating 1µm min Under :nickel plating 1µm min	3	Brass	Over :tin reflow plating 1µm min Under :copper plating 0.3µm min		
NO.	MATERIAL	FINISH . REMARKS	NO.	MATERIAL	FINISH . REMARKS		
2	PBT		2	PBT	UL94V-0(Black)		
UNITS	mm	SCALE	COUNT	DESCRIPTION OF REVISIONS	DESIGNED	CHECKED	DATE
		2 : 1	1	DIS-E-00007453	KIM JAEHYEON	KG. OKITA	20211108
APPROVED :MN. KENJO		20200407	DRAWING NO.		EDC-123343-70-00		
CHECKED :TU. TANIGUCHI		20200407	PART NO.		TM11R-5M2-88(70)		
DESIGNED :KIM JAEHYEON		20200407	CODE NO.		CL0222-2906-2-70		
DRAWN :DS. HIROWATARI		20200407			1/1		